



Welcome to Ingatestone Infant School

2026/27

Please make yourselves comfortable and we will
start our presentation shortly.





Purpose of the meeting is to:

- ▶ Develop your understanding of the aims and values of our school.
- ▶ Find out about your child's first few days and weeks in school.
- ▶ Find out some simple ways to help prepare your child for school.
- ▶ Answer any questions, you might have.





Mid Essex Anglican Academy Trust



- ▶ In September 2024 we became part of the Mid Essex Anglican Academy Trust (MEAAT)
- ▶ Our Trust consists of 5 local schools

Ingatestone Infant School

Ingatestone and Fryerning C of E Junior School

Shenfield St Mary C of E Primary School

Mountnessing C of E Primary School

Bentley St Paul C of E Primary School.

We work collaboratively as a group of schools to share expertise, training and development opportunities and we strive to ensure every child within our trust reaches their potential.





Introductions

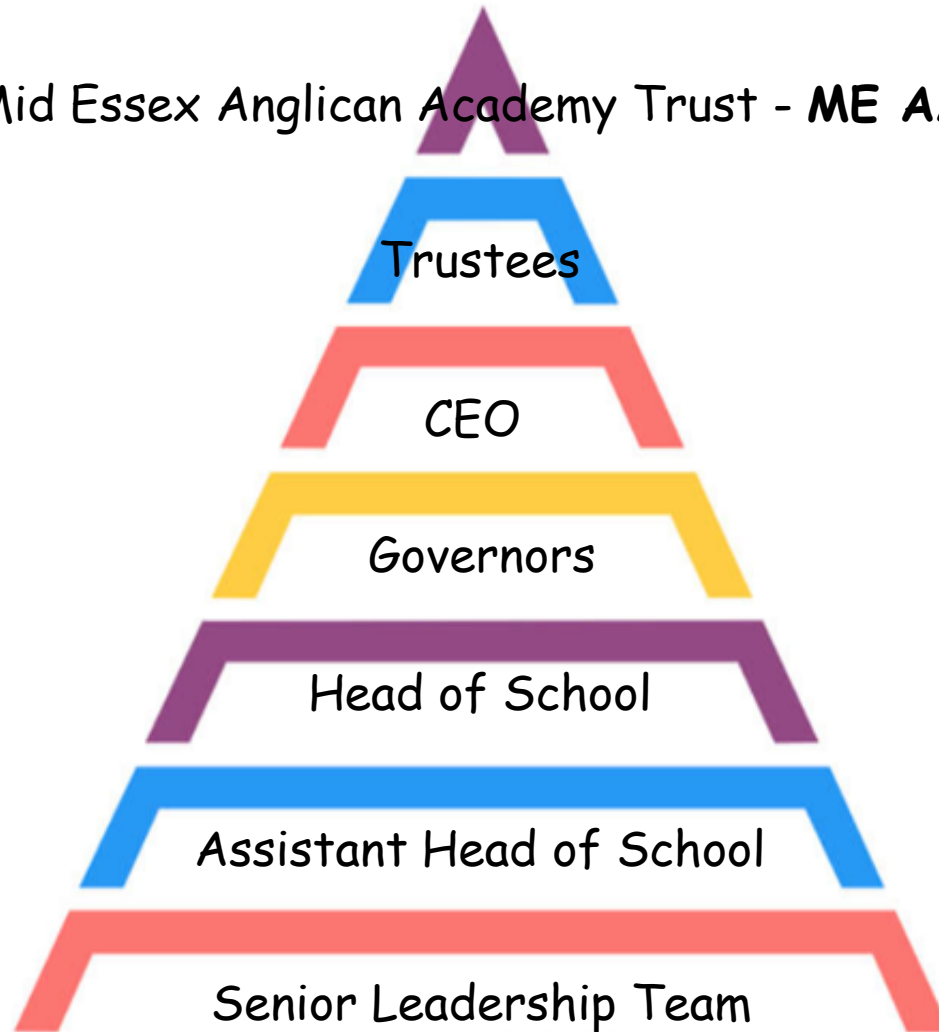
- ▶ Mrs Cannon - Head of School
- ▶ Mrs Read - Assistant Head of School
- ▶ Mrs Jodie Philp - EYFS Class Teacher & lead
- ▶ Mrs Harben & Mrs Harris - EYFS Class Teachers
- ▶ Mrs Murray - Director of Inclusion & SENDCo
- ▶ Mrs Louise Donno, Chair of Governors
- ▶ Mrs Taggart - CEO of the Trust





Leadership of our school

Mid Essex Anglican Academy Trust - **ME AAT**





Our Vision

To unlock every child's potential

Our aim is to ensure that every child's unique strengths are celebrated and strengthened alongside gaining an excellent academic, social, emotional and physical education.



Our Values

- ▶ Be Kind
- ▶ Be Curious
- ▶ Be Hopeful
- ▶ Be Proud
- ▶ Be You





Our EYFS Team



Class Teachers

Mrs Philp

Mrs Harben

Mrs Harris

Mrs Allen (On maternity Leave)



Mrs Harris is our class LSA





Before starting school



- ▶ Prepare uniform (everything labelled, yes everything!).
- ▶ Practise getting dressed independently and wearing the uniform.
- ▶ Book bag - decorate with a small key ring to help you child identify their bookbag quickly.
- ▶ Allow your child to use a knife and fork independently, support them to cut up their own food.
- ▶ Familiarise yourself with our school - read the booklets and information carefully.





School Uniform



- ❖ Black shoes with socks or tights in either grey or white.
- ❖ Grey trousers, shorts, skirt or pinafore (girls are allowed to wear trousers)
- ❖ Blue polo neck t-shirt - with or without the school logo
- ❖ Navy jumper or cardigan - with the school logo

Optional items:

- ❖ Summer dress with white socks
- ❖ Fleece - with the school logo

We have an excellent second-hand shop with pre-loved uniform too if required.





PE Kits



- ❖ PE kit is worn all day on your child's PE day. We will tell you which day that will be in September.
- ❖ Please wear a tracksuit with shorts underneath.
- ❖ No earrings - taping is not allowed, and we are not allowed to remove them on behalf of your child.





Health checks before starting



- ❖ Please have your child's sight and hearing checked to give them the best possible start. They can't tell us themselves at this age!
- ❖ Any concerns about your child's development please talk to your preschool, as they know your child best and can get things started now. It will take us time to get to know your child and we will also be giving them time to settle, plus we will then monitor them to see if we notice any change before drawing any conclusions and this will only add a time delay.
- ❖ It is incredibly hard for us to get speech therapy currently. You can access this much quicker if you do it before your child starts school. There are drop in sessions available at ???????
- ❖ Often, they will say wait until they start school, but they will pick up and work with children over the summer if they feel they need to. It is best to see them as we are not experts and will only seek support ourselves





Transition Arrangements 2026/27



- ❖ Stay and Play session 1 - Friday 5th June 1.30 - 2.45pm - Drop and go.
- ❖ Stay and Play session 2 - Friday 19th June 1.30 - 2.45pm - Parent workshop in the hall.
- ❖ Home visits - Week beginning 29th June. This is your chance to speak privately with us, ideally your child needs to be there too. It is very difficult for us change appointments due to covering the class teacher.
- ❖ Exhibition Afternoon - 15th July 3.15pm

Autumn Term starts Wednesday 2nd September





Starting School



SEPTEMBER 2026

Mon Tue Wed Thu Fri

1 2 3 4

7 8 9 10 11

14 15 16 17 18

Half days - 2nd - 11th September

Morning group 9.00 - 11.30

or

Afternoon group 12.30 - 15.00

Half days and lunch - 14th & 15th September

Morning group 9.00 - 12.30pm

or

Afternoon group 11.45 - 15.00pm

Wednesday 16th September - All full time

Half day sessions are planned to support a smooth and positive transition into school. It allows staff time to really get to know your child, in a small group, building important attachments. It give the children time to learn the new routines and expectations and find their way around the classroom with support.

Our statutory baseline assessments are done in these first few weeks too.





Attendance and Punctuality



- ❖ Ensure regular and punctual attendance.
 - Arrival from 8.40 am
 - Registration is 8.50 am
 - Between 8.50 am and 9.00 am children are marked as late.
 - Any arrivals after 9.00 am are marked as an unauthorised absence even when they are in.

- ❖ Always leave a message via *Compass* if your child is unwell, we may phone you for more information.

- ❖ If late, pupils must be signed in by an adult at the school office. Failure to do this will result in an unauthorised absence.





Attendance



Our attendance is above National Average



We work hard to establish a culture that is based on strong partnerships.



Children at Ingatestone Infant School really don't want to miss school!

90% attendance = 1 day off every two weeks!

As working parent's, we can't do that, so we teach our children that this is not acceptable.



Routine medical appointments should be booked in holiday times or after school. However, we do recognise that some hospital appointments are in school hours, if this is the case we will ask for the appointment letter/text.

Excellent attendance



Excellent learning



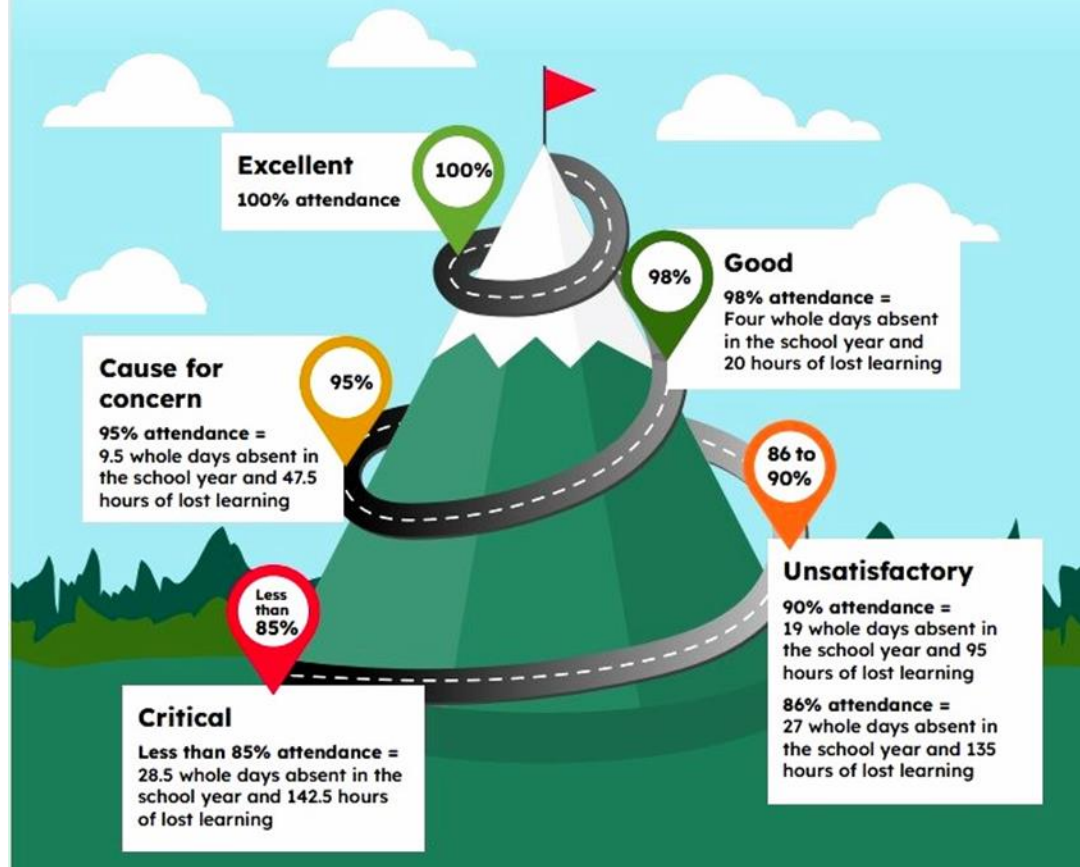
Happy children



Happy parents



Where does your child sit on the attendance mountain?





Requests for holidays



- ❖ Any request for holidays during term time cannot be authorised. If you do choose to remove your child from school during term time, then their absence will be recorded as 'unauthorised'.
- ❖ We must also advise that unauthorised absences may, and frequently do, incur a fine.

From August 2024, the fine for school absences across the country increased to **£80 if paid within 21 days or £180 if paid within 28 days.**

In the case of repeated fines, if a parent receives a second fine for the same child within any three-year period, this will be charged at the higher rate of £160. Fines per parent will be capped to two fines within any three-year period. Once this limit has been reached, other action like a parenting order or prosecution will be considered.

If you're prosecuted and attend court because your child hasn't been attending school, you could get a fine of up to £2,500.





Everyday Counts...



A day here or there doesn't seem like much, but...

| When your child misses just... | That equals... | Which is... | And therefore, from EYFS to Year 12, that is... | This means that the best your child can achieve is... |
|--------------------------------|--------------------|-------------------|---|---|
| 1 day each fortnight | 20 days per year | 4 weeks per year | Nearly 1 $\frac{1}{2}$ years of learning | Equal to finishing Year 11 |
| 1 day a week | 40 days per year | 8 weeks per year | Over 2 $\frac{1}{2}$ years of learning | Equal to finishing Year 10 |
| 2 days a week | 80 days per year | 16 weeks per year | Over 5 years of learning | Equal to finishing Year 7 |
| 3 days a week | 120 days per years | 24 weeks per year | Nearly 8 years of learning | Equal to finishing Year 4 |

Give your child every chance to succeed...

Attendance Matters



Every Day Counts....





ATTENDANCE MATTERS

LOST MINUTES
=
LOST LEARNING!

 EVERY SCHOOL DAY COUNTS!



Every school day counts BUT every minute is equally important!



If your child too ill for school?



If your child has sickness and/or diarrhoea we follow the NHS recommended guidelines that your child should not attend school for 48 hours after their last bout of sickness.

<https://www.nhs.uk/live-well/is-my-child-too-ill-for-school/>





Making Good Progress



- ❖ Baseline or On Entry assessment (statutory assessment)
- ❖ EYFS workshops - All about phonics and the Early Years Curriculum. This is followed by a class visit and spending the afternoon with your child.
- ❖ Parents' evenings
- ❖ Ongoing assessment throughout the year
- ❖ End of year outcomes





EYFS Curriculum - areas of learning and development



Seven areas of learning and development - all important and inter-connected

Prime (3 areas):

- ▶ Communication and language
- ▶ Physical development (gross and fine motor skills)
- ▶ Personal, social and emotional development



Specific (4 areas):

- ▶ Literacy
- ▶ Mathematics
- ▶ Understanding of the world
- ▶ Expressive arts and design





Helping with Learning at Home

❖ Read! Read! Read!

One Million Word gap - Children who were read up to five books a day before starting school had heard 1.4 million more words than those that had never been read to.



❖ Check the book bags everyday

❖ Homework

- Reading
- **Practical Math's activity**
- Handwriting practice
- Sound and word practice (this will be part of the EYFS workshop).





Communication from the school

- ❖ Newsletter weekly from the head - online /email
- ❖ Emails for letters and other communications
- ❖ Texts for immediate class or school messages from the office



Communication from the home

- ❖ Immediate messages for the teacher, via a written note or phone call via the office.
- ❖ Non-urgent enquires to admin@ingatestone.essex.sch.uk
- ❖ Private conversations should be arranged for the end of the school day, not before.

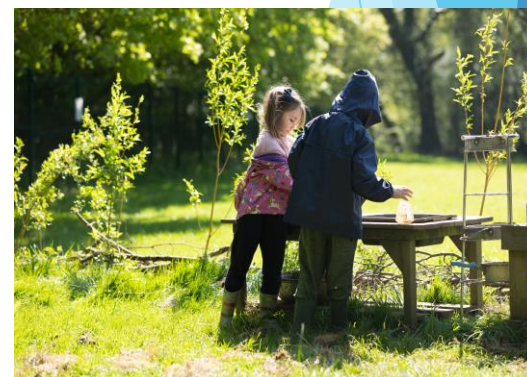




Forest School



Add slide about forest school





Our School Dinners



- ❖ The menu follows the National Food Standards
- ❖ Three week rolling menu, three daily choices
- ❖ School dinners are free for all infant children
- ❖ Menu published weekly in the Newsletter
- ❖ Packed lunches are allowed but parents are expected to follow the school policy
- ❖ No nuts please
- ❖ Support your child using a knife and fork independently both to cut up and 'stab' their food.





We all work together.



The League of Friends:

- ▶ Come along to school events and get involved.
- ▶ Support our League of Friends as they have invested a lot in the school.

Our School Governors:

Louise Donno - Chair of Governors

Alice Murray - Staff Governor

Adam Cooper - Parent Governor

Laura Parker- Parent Governor (Trust representative)

Harriett Whyman - Parent Governor

Jenny McCarthy - Parent Governor

Sue Thomas - Community Governor





What can you do to help?

Ensuring your child has correct clothing and equipment for school that is.....

all labelled!





Let's start the journey

